



Chapter 0 / General information

- AudioManager main features
- AudioManager registration

Chapter 1 / Hardware optimizations

- Changing the font size on HiRez devices
- Closable dynamic input area (DIA)
- 5-way navigator, jog, volume and keyboard
- Supported devices

Chapter 2 / Create a new entry manually

- Main information
- Camera and JPEG support
- Advanced information

Chapter 3 / Manage borrowed and lent items

- Owning categories
- Return dates and names

Chapter 4 / Filtering items and global search

- Filtering database content
- Using global search

Chapter 5 / Query information online

- Querying modes and localization
- ASIN and UPC/EAN numbers
- Barcode/13 compatibility
- Optional proxy configuration

Chapter 6 / Send, export and move your database

- Send your whole database
- Export a selection as CSV or XML
- Use your database from a memory card
- Use AudioManager from a memory card

Chapter 7 / AudioManager version history

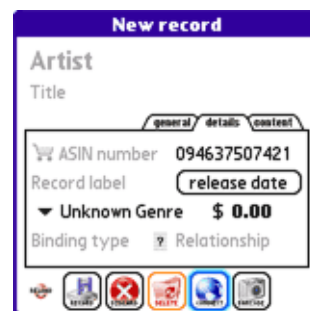
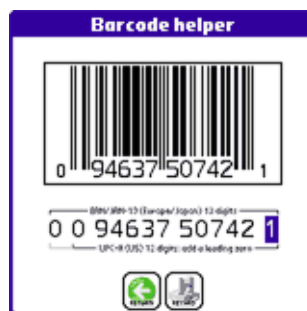
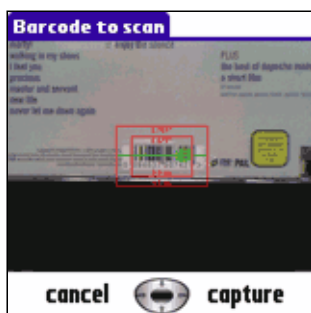
Chapter 0 / General information

AudioManager key features:

- manage your collection of records
- add records manually or using online searches
- manage borrowed and lent records
- database and application usable from memory card

AudioManager main features

AudioManager is a user friendly application that lets you manage your collection of records (CD, DVD, LP, UMD...) by using your PDA. Records can be added manually or using online searches. Information as release date, cover, and track list... can be added easily.

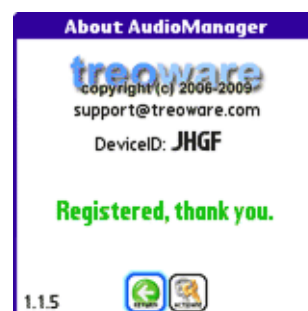
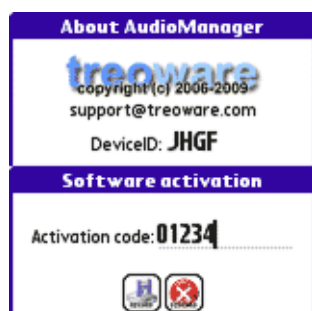
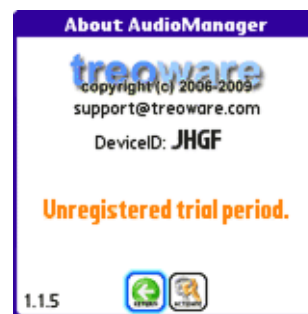




AudioManager registration



You can try **AudioManager** during a trial period. After this trial period, features are restricted and you need to register to remove limitations. Please support shareware applications!



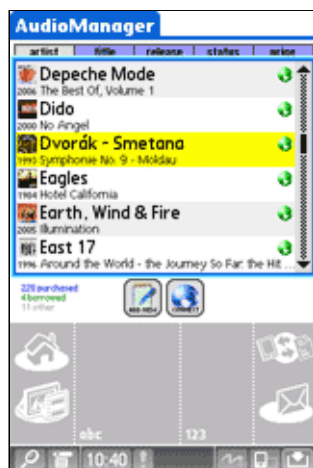
Chapter 1 / Hardware optimizations

Changing the font size on HiRez devices

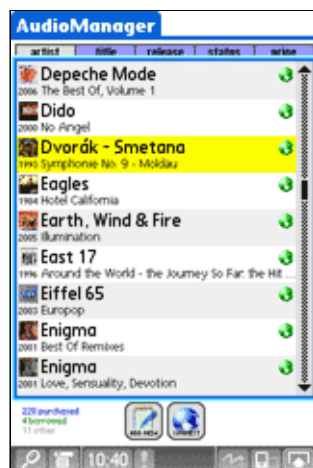
AudioManager is optimized for both LoRez and HiRez devices and will adjust the display to take advantage of your device resolution. However, if you want to use bigger fonts, please select "Options > Toggle font size" (this features is only available on HiRez devices).



Closable dynamic input area (DIA)



DIA with small fonts



DIA with big fonts



DIA with small fonts



DIA with small fonts



DIA with big fonts



DIA with big fonts

5 way navigator, jog, volume and keyboard

AudioManager is optimized to detect and use entry methods for most peripherals. Up to 3 levels (attached to 3 different actions) can be available and associated to available buttons. Configuration is summarized in the following table. When a key pressed is not handled, it is used as a lower level: for example "up #3" will act the same as "up #1" if "up #3" and "up #2" are not relevant in a form.

Special keys	Single key	Shift+Key	Option+Key
5-way up	Move focus up ⁽¹⁾	Up #1 ⁽²⁾	Up #3
Volume up	Up #2	Up #1	Up #3
"Old" page up	Up #1	Up #2	Left #3
"New" d-pad up	Up #1	NA	
Treo jog up	Up #2	Up #2	Up #3
Clie jog up	Normal: Up #1	Pushed: Up #2	NA

(1) except when scrolling the records list: Up #1

(2) except when scrolling the records list: Up #2

Supported devices



AudioManager is compliant with Palm Powered Solutions Test Application Compliance Testing Version 2.0.

The Palm Powered Solution mark identifies software that has passed testing to ensure its compatibility with the Palm OS platform: It reassures customers that third-party software products will run on their Palm Powered devices (for both 68k or ARM based devices). Anywhere in the world, in all languages, Palm OS users will be able to look for the Palm Powered Solution mark to help them match Palm OS compatible software with Palm Powered devices. The Palm Powered Solution mark indicates platform compatibility with Palm OS- that is, that the application has been tested to be compatible with, and will run on all versions of Palm OS (including Palm OS Cobalt, if the marketing material indicates Palm OS Cobalt compatibility).

Use of the Palm Powered Solution mark indicates that the application will run on devices that have the Palm OS inside and will be forward compatible with the latest versions of the Palm OS.

The use of the "Palm Powered Solution" mark is not an endorsement from PalmSource. It does indicate certain characteristics and attributes of an application that have been positively tested by the developer. It does not imply the application supports other features of the platform such as high-resolution screen sizes and/or color.

AudioManager should be safe for any PalmOS device, release 3.5 or higher. Nevertheless, if your device is not in the above list, be sure to backup your data before installing **AudioManager**. Any compatibility report for a non-listed device will be greatly appreciated and will guarantee your device to be taken into account for further releases. **AudioManager** has been tested on: **Centro** (gsm), **Treo 680**, **Treo 650** (gsm), **Treo 600** (gsm), **Treo 180** (900/1800), **Treo 180** (900/1900), **Zire 72**, Treo 270 emulator, Garnet 5.4 simulator, Cobalt 6.1 simulator.

This software is provided by the copyright holders and contributors "as is" and any express or implied warranties, including, but not limited to, the implied warranties of merchantability and fitness for a particular purpose are disclaimed. In no event shall the copyright owner or contributors be liable for any direct, indirect, incidental, special, exemplary, or consequential damages (including, but not limited to, procurement of substitute goods or services; loss of use, data, or profits; or business interruption) however caused and on any theory of liability, whether in contract, strict liability, or tort (including negligence or otherwise) arising in any way out of the use of this software, even if advised of the possibility of such damage.

Chapter 2 / Create a new entry manually

Main information

Main information is the name of the artist name and the title of the record. A completion feature suggests artists by using a list of known artists and your own database. Of course, you can ignore these suggestions if this artist is not yet known by **AudioManager**. Once a record by an artist is created, this artist is added in suggestions next time. Second tab lets you define several advanced information, important being the release date. This information is not mandatory, but the year of release is reported in the main list when it is available. If you do not know the exact release date, you can select the year

of copyright and set the day on January 1: in this way **AudioManager** can sort records of an artist according to the release dates in the main list.



Camera and JPEG support



Recent devices with a built-in camera can employ it to capture the cover of a record. The currently supported devices are **Treo 600**, **Treo 650**, **Treo 750p**, **Zire 71** and **Zire 72**. Devices more recent are likely to be compatible but compatibility has not been confirmed: feedbacks from your own experiment are appreciated. Note that the covers can also be downloaded online if your device does not have a built-in camera: please refer to the next chapter for more details. Compression of images in JPEG is supported by using **pnoJpegLib** on PalmOS 5 (ARM processors) devices and **JpegLib** on older devices: for stability and speed reasons, owners of recent devices might install and use **pnoJpegLib** rather than **JpegLib**.

It is advised to install JPEG to optimize the size of your database. `JpegLib.prc/pnoJpegLib.prc` are distributed with **AudioManager** and can be downloaded from the following address:

Older 68000 devices **JpegLib** <http://www.nyctergatis.com/jpeglib/index.html>
 Recent ARM devices **pnoJpegLib** <http://www.bin-people.de/pnoJpegLib/index.html>

Once installed, covers are saved in JPEG format: if you beam your database to another device you might install **JpegLib** or **pnoJpegLib** on this device to see covers.

Advanced information



Some optional information can be added: binding, genre, price and currency, relationship with another artist, ASIN and UPC/EAN values, tracks (and other information). The relationship with another artist lets you define an artist related to the current record: this record will then be classified in the main list with this artist. Default currency is chosen according to your PalmOS preferences: you can tap on the currency to change it into another currency. Available currencies are USD, CAD, EUR, JPY and GBP. ASIN and UPC/EAN numbers are discussed in chapter 5.

Chapter 3 / Query Manage borrowed and lent items

Owning categories

Record's information lets you set an owning status: a record can be a purchased item, a borrowed item, an item you could wish to buy, or just information you want to keep the trace.



Return dates and names

If you own a record but lend it to a friend, you can tap 'disc in stock' once or twice and select when this record was lent and to which. Selecting 'cancel' instead of a date will put your record back in your collection.



If you have borrowed a record, you can tap 'no expiration' to select a date of return. Records are sorted and coloured according to the owning status in the main list.

Chapter 4 / Filtering items and global search

Filtering database content

You can sort your collection by artist name, album title, release date, owning category or price. On **Treo 600**, **Treo 650**, **Treo 680** and **Treo 700p** devices, you can press Shift+NavRight (Right #1) and Shift+NavLeft (Left #1).



If your device doesn't support 5-way navigation, PageUp (Up #1) and PageDown (Down #1) will scroll the list. If your device supports 5-way navigation, you should use NavRight (Move focus right) and NavLeft (Move focus left) to put or release the focus: NavUp (Move focus up) and NavDown (Move focus down) will scroll the list. VolumeUp (Up #2), VolumeDown (Down #2), Option+NavUp (Up #3) and Option+NavDown (Down #3), Option+VolumeUp (Up #3) and Option+VolumeDown (Down #3) are also available on **Treo 600**, **Treo 650**, **Treo 680** and **Treo 700p** to scroll a full page and to jump to the bottom/top of the list.

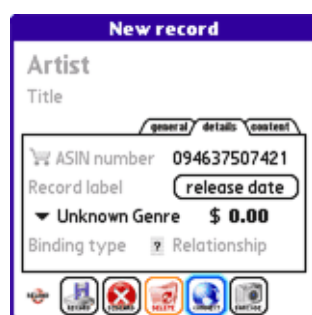
Using global search

Standard global find feature is supported by **AudioManager** and can be used to find a record, using the name of the artist or the title of this record. Tapping on the found entries will open the selected entry in **AudioManager**.



Chapter 5 / Query information online

Querying modes and localization

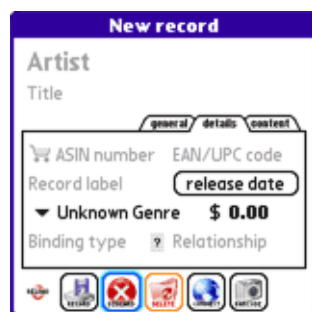


You can write the content of your record manually, but if you have an Internet connection available for your device, it can be much faster to seek information online for your record, including tracks information. Online searches use Amazon's web services to find information on your record: search key can be the UPC/EAN barcode value, Amazon's ASIN value, or some keywords of the name of the artist and/or the title of the record. In order to improve quality of the results, **AudioManager** will query localized Amazon's services but will give a higher priority to one of them according to your PalmOS preferences.



RELOAD **CACHED** **UPDATE** You can note a small disc coloured on the lower left part of the screen, changing from red to green and then blue when tapped. Red (reload) will replace current data by online retrieved information. Blue (update) will add only missing information, Green (cached) will skip all fields to keep existing information.

ASIN and UPC/EAN numbers

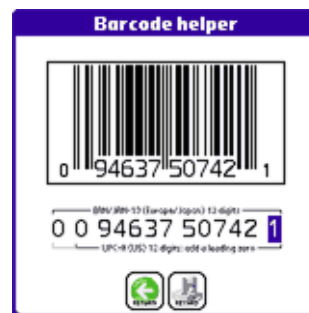
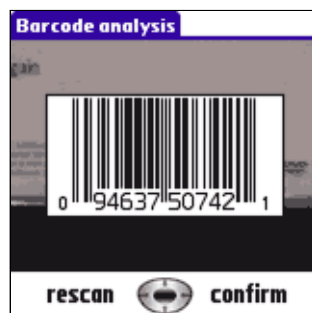


ASIN number is a single value assigned by Amazon for each record. This value is the best to seek information on a record from Amazon's web services; alas we don't know usually this value for a record! However, you may want to add a record in your database during your visit to Amazon's web site: description contains this ASIN value and you can report it in **AudioManager** and query information online. UPC/EAN numbers are barcode values printed on the cover of your record. **AudioManager** can use this UPC/EAN number to query Amazon's web services and find the associated ASIN value. This lookup cannot succeed at 100%, but will give often very good results.

Finally, if you do not know the UPC/EAN value, you can query Amazon with keywords of the name of the artist or title of the record. **AudioManager** will keep the best record matched according to the search: this search might be successful for recent and/or well-known articles. Note for devices with an Internet connection available: when an item's ASIN is known (manually or as a search result), you can use the cart icon to open this item's page at Amazon from your browser.

Barcode/13 compatibility

AudioManager is compatible with **Barcode/13**. Naturally, using **Barcode/13** is not mandatory: you can enter an UPC/EAN barcode with your stylus or keyboard.



Optional proxy configuration

Accessing a web page requires a lookup to obtain an Internet address from a human readable address; this resolution adds an extra request that can be avoided using a proxy: the use of a proxy is strongly recommended with slow GSM data internet connections.



AudioManager lets you indicate a proxy configuration for your Internet connection. This configuration is attached to the current network preferences: if you use several network configurations at home or at your office, **AudioManager** will select the suitable proxy configuration. Proxy configuration has to be configured if you need a proxy authentication: **AudioManager** is compatible with empty and basic authentications.

Chapter 6 / Send, export and move your database

Send your whole database

If you own several devices, you can use menu 'Options > Beam database' to send your whole database using infrared or bluetooth. Database can be sent to a computer for backup purposes using bluetooth and can be restored using HotSync application from this computer.

Export a selection as CSV or XML

Current list view can be exported as a CSV or XML file towards a computer using bluetooth. The XML format is inspired by Amazon's web services format, the CSV format can be imported towards Microsoft Excel.

Use your database from a memory card

You can move your database to a memory card. However, your database will be moved at launch time and **AudioManager** start/exit will take several seconds in this case.



Use AudioManager from a memory card

AudioManager can be run from a memory card. To avoid data loss, be sure to follow these steps:

1. Move your database to your memory card from **AudioManager** menu
2. Open the registration menu "Options > About" to retrieve your registration key
3. From the applications launcher, copy **AudioManager** to your memory card
4. From the applications launcher, delete **AudioManager** from the main memory
5. Now you can find and run **AudioManager** from your memory card
6. Restore your registration key in "Options > About"
7. Not mandatory: you can move your database back to the main memory

Be sure you have moved your database to your memory card and read your registration key: when deleting **AudioManager** from the main memory **all attached data** will be destroyed, including your database and your registration key. Moving your database to your memory card **before** deleting the application will avoid this loss.

Chapter 7 / AudioManager version history

2009-11-07: AudioManager 1.1.5

- Improved feature: online lookup improved
- Improved feature: minor GUI changes

2009-10-10: AudioManager 1.1.0

- Improved feature: online lookup fixed

2008-10-08: AudioManager 1.0.9

- Corrected issue: main list improper line selection

2008-08-09: AudioManager 1.0.8

- Improvement: minor "Barcode helper" changes
- Corrected issue: menu not closing properly
- Corrected issue: DIA compatible devices (Palm TX)

2008-08-03: AudioManager 1.0.7

- New feature: "Barcode helper" to enter barcode values
- Corrected issue: copy/paste improvement
- Corrected issue: DIA redraw improved

2007-11-26: AudioManager 1.0.6

- Improved feature: online lookup
- Corrected issue: graphic glitch in the main list

2007-08-05: AudioManager 1.0.5

- New feature: Dynamic Input Area (DIA) support

2007-06-20: AudioManager 1.0.4

- Selection issue in text areas fixed
- Memory usage reduced

- Scrolling speed improved
- Low memory errors handling
- Online album art update fixed
- Online keywords search fixed
- Net Library memory leakage fixed
- JpegLib compression enabled
- Internal fixes and optimizations

2007-03-23: AudioManager 1.0.3

- Copy & paste issue on some fields fixed

2007-02-11: AudioManager 1.0.2

- Minor fix and optimization

2007-02-07: AudioManager 1.0.0

- First official public release

Last update 2009-11-07

Copyright © 2006-2009 J.F.Morreeuw. All rights reserved.